



WETTENHALL ENVIRONMENT TRUST
TWENTY-EIGHTH **ANNUAL REPORT** — 2024

WETTENHALL ENVIRONMENT TRUST



Dr Norman Wettenhall

An environment organisation and perpetual charitable trust, the Wettenhall Environment Trust's objective is to support projects that enhance or maintain the vitality and diversity of the Australian natural living environment.

Established in 1997, the Wettenhall Environment Trust (then The Norman Wettenhall Foundation) was the culmination of founder Norman Wettenhall's lifelong love of the Australian bush and the birds and plants that inhabit it.

Funds were raised from the sale of Norman's treasured natural history book collection,

which was widely regarded as the most complete private collection celebrating the wonder and beauty of Australia's fauna and flora.

Since Norman's death in the year 2000, the Trust has continued his legacy to fund a wide range of conservation projects, significantly increasing distributions and building the corpus.

Wettenhall Environment Trust is a founding member of the Australian Environmental Grantmakers Network (AEGN).



CHAIRPERSON REPORT



At our strategic planning meeting in 2022, we decided to increase the amount of money for grants, and last financial year we allocated almost \$350,000.

This covered 28 small environmental grants (SEGS), a salary for a facilitator of the Regent Honeyeater project, two Women's Environment Leadership Australia grants (WELA), and an Australian Wildlife Conservancy internship..

This increase in our grantmaking is to try and address the urgency of the biodiversity crisis here and now.

We are able to do this for several reasons. Firstly, there has been an increase in donations from our supporters, for which we are extremely grateful.

We also have excellent financial advisors, ACCRU,

who keep our small, self-managed portfolio strong despite our income being less than our expenses (see page 20 and 21 for finance summary). We heartily thank them for this pro bono service and attending our Finance Committee meetings..

Importantly, Beth, our dedicated Executive Director, watches every dollar and cent spent, keeping operating costs as low as possible.

Under the sea

Projects encompassing marine ecosystems were the focus of four (14%) of our successful SEGS applications.

Topics amongst the increasing number of marine applications have included seagrasses, turtles, dolphins, sharks, and other marine animals, shellfish reef development, and coastal erosion.

In this annual report, we have highlighted a few of these recent marine projects, including: Environs Kimberley, Life Under the Wharf, and a collaborative research project by Flinders University and the Kangaroo Island Landscape Board.

How can we help?

Another important role of our funding is to 'rescue' worthwhile projects.

Sometimes a group or individual may need interim funding, at a moment between the good times. We recognise when our contribution will make a difference.

Examples include providing:
a) Environs Kimberly with wages and consumables to allow for the continuation of Broome community seagrass monitoring; and

b) funding for a coordinator for Grow West, an organisation that is restoring landscapes in the west of Melbourne, involving local communities in native planting activities.

Program review

Only one landscape restoration project (the Regent Honeyeater Project – see page 16) has

been supported this year because the management and evaluation of the eight projects under our landscape restoration program have been the subject of a reappraisal.

In November 2023, we met at the University of Melbourne to discuss the highest priority landscapes in Victoria, the meaning and values of biodiversity, and how these align with our current projects. This workshop was led by board members Geoff Park and Libby Rumpff.

To help us look for new opportunities, Libby and Geoff invited conservation science experts representing some of our long-term partners such as Trust for Nature (Doug Robinson) and Birdlife (Naomi Indigo), as well as Tim Barlow, from Goulburn Broken CMA, and Matt White from the Arthur Rylah Institute.

We followed up with a strategic planning meeting in March 2024 at the Winton Wetlands, where we evaluated our current portfolio and revised the principles and guidelines, performance, and assessment measures.

...and in other news

Beth and I attended the Australian Environment Grantmakers Network (AEGN) conference in Melbourne in

May 2024 at which there were many interesting speakers on topics such as the reform of the Environment Protection and Biodiversity Conservation (EPBC) Act, climate change advocacy and education, with a prominent focus on nature, saying 'there's no time to waste.'

AEGN has developed a draft Nature Funding Framework, which is most relevant to our interests, ie to 'protect, restore and manage nature.'

WET interacts with AEGN in several ways; through Beth's involvement in a number of sub-groups and support networks; and collaborative funding opportunities.

The AEGN hosted a session on the changes to the EPBC Act and we heard from conservation groups who were campaigning for the best outcomes for biodiversity protection. From this, WET provided a \$20,000 grant to BirdLife to actively campaign on these issues with the Places you Love Alliance.

Late in May, we visited French Island with Trust for Nature (TFN) staff to see some covenanted properties, but our trip was cut short by bad weather and a need to catch the last ferry before it was cancelled.

We were looking for opportunities to partner with TFN again, thinking about

French Island as a potential 'ark' in Victoria for endangered flora and fauna, protected from mainland nature invaders. There is, however, much to do to remove feral animals and invasive weeds that thrive there, with our role yet to be determined.

On behalf of the Trustees, and all who are linked to WET, I want to thank Beth Mellick our ED, for her diligent oversight of finances and her tireless networking, initiatives, deep knowledge, and excellent documentation of everything.

It is a big job keeping track of all the grant applications, the follow-up requirements whether funded or not, and their outcomes in due course.

The Board meetings are prepared meticulously, often with a vegetarian lunch she has brought along!

This year there have been two changes to the Board. Cecilia Myers was appointed in November 2023, and in May 2024 we farewelled Kirsten Hengen our exceptionally talented and dedicated finance expert. I thank the entire Board for their continued interest, expertise and support.

Professor Jane Halliday, AM, Chair

BOARD OF TRUSTEES

The Board of Trustees meet and make decisions about awarding grants, they review grantee final reports, they make decisions about our investments, and stay abreast of news in the sector. The team goes away every year for strategic planning and a field trip. Many thanks to our committed and knowledgeable Trustees, who spend a considerable amount of time assessing and scoring applications and final reports.

Each Trustee brings with them skills and knowledge in particular areas. If you would like to read more about their expertise, you can visit <https://wettenhall.org.au/about/the-team/>

This year we are excited to welcome Cecilia Myers onto the board, bringing with her considerable knowledge and expertise in landscape restoration, and sustainable land management, both in Victoria and the Kimberley.

We say goodbye to our Finance Chair, Kirsten Hengen, who was a powerhouse heading up our Finance Committee. She developed forecasting and budgeting tools for us and helped guide our wish to increase grantmaking. She has 'handed on the baton' to yet another powerhouse accountant, and we look forward to working with her.



Photos: left is Jane Halliday (Chair), and below left to right is Gib Wettenhall, Geoff Park, Adam Wettenhall, Libby Rumpff, Trudy Wyse and Cecilia Myers



EXECUTIVE DIRECTOR REPORT

Now that all my children have left home, I have even more time to spend on my citizen science commitments here in central Victoria - Brush-tailed Phascogale nest box monitoring for Connecting Country; mammal nest box monitoring for my local Landcare group; and Swift Parrot monitoring and volunteer coordination around Castlemaine for BirdLife. Thank you to my Board of Trustees for allowing me to get out and about and participate with these projects.

Small grants are great

The importance of these grants cannot be understated, the results for nature, and also for community. Small grants can enable pilot studies to be conducted and to pay people for their valuable work. They can empower organisations to mobilise and sometimes to leverage larger funding from our partners and collaborators. Most importantly small grants enable groups to find out more about native species.

For many grassroots conservation groups small grants are the exact fit for what they are doing, with larger grants eaten up by admin, or being a burden to manage. Our grantees will tell us if they need more money, a larger grant next time, or whether they are happy with the results of the project.

You will see in this report that people have passion projects that they must follow. They are training future citizen scientists to do monitoring, they are coordinating and participating in on-going monitoring programs. They are trialling new methodologies for nature conservation, and conducting research hand-in-hand with what's happening on the ground. Some conservationists are looking to protect endangered species through changes to legal frameworks. Others are carrying out re-introductions and translocations, as well



as continuing to produce guides to ensure people know what they are looking at.

If you would like to work with us to support this kind of on-ground, grassroots nature conservation, you can become a donor or larger collaborator.

Thanks to the Cybec Foundation for being one of these larger collaborators and partnering with us to support projects too big for us alone. Thanks to other groups like PurryBurry Trust who also fund alongside us on larger grants.

One big grant

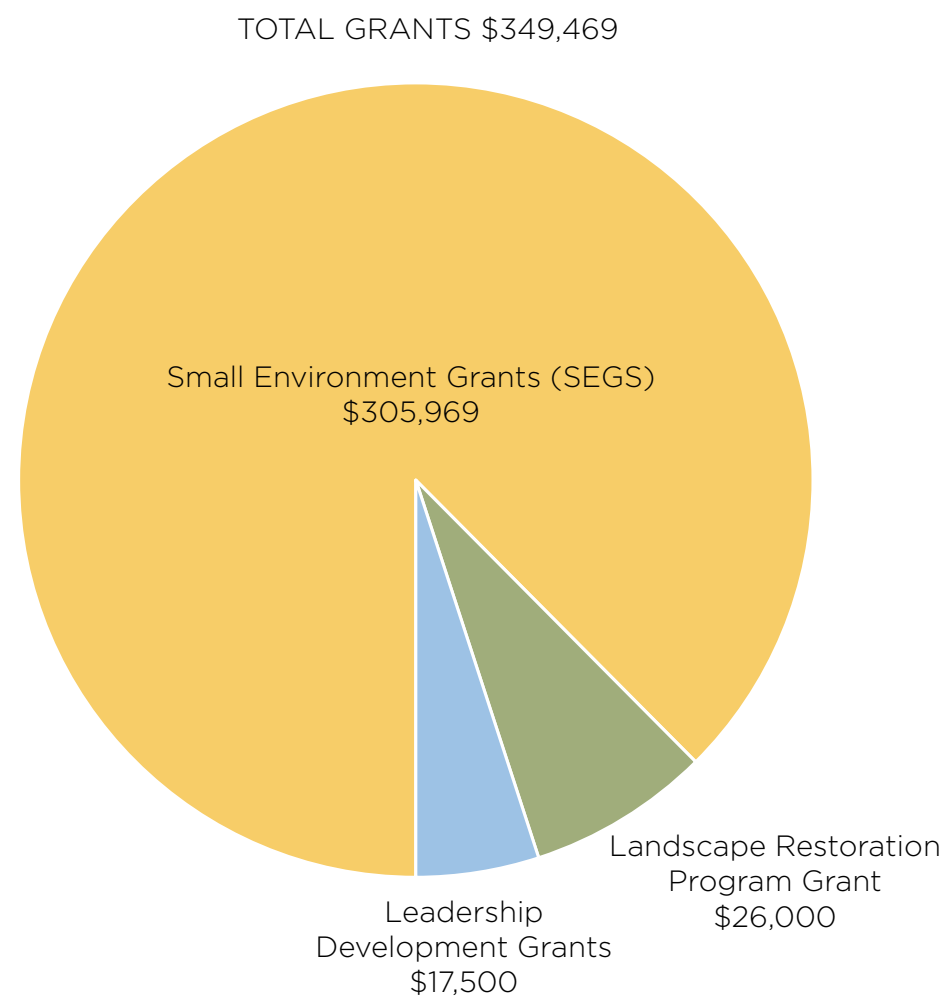
Acknowledging some larger costs in grassroots projects, we are going to give out one large grant every year, amongst these terrific smaller grants.

This year it was awarded to the Winton Wetlands for their Growling Grass Frog Project (page 15), and if you are ever around Winton in Victoria you should stop in to their café and education centre and check out their frog breeding facilities.

Beth Mellick, Executive Director

GRANT MAKING ACTIVITIES 2023/2024

Wettenhall Environment Trust has three grants programs - the Small Environmental Grant Scheme (SEGS), the community-driven landscape restoration program, and the Leadership Development Grants program.



SUPPORT FOR LEADERS IN CONSERVATION

As well as our own Leadership Development Grants Program, WET is supporting two other leadership programs, specifically looking at helping people achieve great things in the field of nature.

WELA
Women's Environmental Leadership Australia
Scholarship
wela.org.au

WELA is a national leadership program for women working or volunteering in the environment sector. The training they receive gives participants skills, knowledge and confidence to lead projects.

WET has set up a scholarship for women who need support and who are connected with the field of nature conservation.

This year we supported Saras Kumar and Sarah Eccels and we wish them well with their future endeavours.

<https://wela.org.au/programs/wela-national-program/scholarships/>

AWC
Australian Wildlife Conservancy
Intern Program
www.australianwildlife.org

AWC is a global leader in conservation, managing sanctuaries across more than 12.9 million hectares. They implement and practice on-ground conservation to protect wildlife. The intern program offers university graduates the opportunity to work on one of their properties and to learn skills in on-ground conservation.

WET is proud to partner with the Cybec Foundation to support one intern annually and this year it was Monash graduate Christina Paizis.

<https://www.australianwildlife.org/work-with-awc/internships/>



Photo: Participants in the WELA program for 2023/2024



Photo: Christina Paizis, Wettenhall grantee, intern on an AWC property

SMALL GRANTS AWARDED 2023/2024

Small Environment Grant Scheme (SEGS)

ORGANISATION	PROJECT	
Ecosystem Management and Biosecurity Solutions	Protecting Pandanus in QPWS managed tenure of the discovery coast	\$18,000
Hobsons Bay Wetland Centre	Training volunteers to monitor bird populations in the Cheetham and Altona Key Biodiversity Area	\$12,085
Conservation Council WA	Gaining a greater understanding of bat populations in WA through the power of citizen science	\$20,000
Arcadia Coastcare	National Park walking track booklet	\$10,000
Cannibal Creek Landcare	Studying the Bandicoots: A community survey of Southern Brown Bandicoots	\$16,600
Wildcare Friends of Deal Island	Deal Island Ragwort beetle project	\$4,510
Grow West	Grow West program facilitator funding	\$25,000
Understorey Network	Website and Tasmanian native plant database redesign	\$14,136
Friends of Brisbane Ranges	Investigating the housing shortage for Brush-tailed Phascogales and other threatened species	\$10,912
BEAM Mitchell Environment Group	Mitchell Shire's natural treasures brochure	\$2,000
Victorian Malleefowl Recovery Group	Malleefowl resource use across agricultural mosaics	\$19,820
Landcare Victoria	Victorian Landcare forum in Bendigo	\$2,000
Life Under the Wharf	Tathra Wharf seahorse habitat resoration	\$13,315
Grassland Earless Dragon Alliance	The lost dragon: a race against extinction to rediscover the critically endangered Bathurst Grassland Earless Dragon	\$10,820
Friends of Jirdarup Bushland	Birds of Jirdarup	\$6,000
University of WA	Unlocking microbial diversity: conservation and biosecurity applications in microalgal species	\$5,000

Small Environment Grant Scheme (SEGS) continued

ORGANISATION	PROJECT	
Environs Kimberley	Broome community seagrass monitoring project	\$9,845
Tasmanian Land Conservancy	Conservation interventions to safeguard the Marsh-leek orchid	\$9,850
Winton Wetlands	Growling loud in Winton Wetlands and the region	\$50,000
Merri Creek Management Committee	Using citizen science with the CALD community to protect Growling Grass Frogs on the Merri Creek	\$5,500
University of Armidale	Testing for rat predation on the critically endangered Christmas Island Blue-tailed Skink	\$5,000
Curtin University	Decrypting dolphins: understanding the link between critically-endangered Burrunan Dolphin vocalisations and behaviour	\$5,000
Royal Botanic Gardens	Genetic analysis to guide the re-introduction of a locally extinct threatened species of Banksia in northeast Victoria	\$6,000
Flinders University & The Kangaroo Island Landscape Board	Evaluation of Kangaroo Island artificial reef structures	\$5,000
BirdLife Bass Coast	Promoting community trials to conserve EPBC-listed vulnerable Blue-winged parrots	\$6,026
Gippsland Threatened Species Action Group	Cool temperate rainforest survey	\$7,550
Castlemaine Field Naturalist Club	Flora guide update and reprint	\$1,000
Australian Wildlife Conservancy	Intern program 2024	\$11,500
Women's Environmental Leadership Australia	WELA grant Sarah Eccles	\$3,000

DONOR SOURCE: Biophilia Foundation, Victorian Malleefowl Recovery Group (Geoff Armstrong Bequest), Blue Sky Environmental, and Wettenhall Environment Trust donors, see Donor Page for full list of donations.

SMALL ENVIRONMENT GRANTS

Environs Kimberley

“Broome Community Seagrass Monitoring Project”

The Broome Community Seagrass Monitoring Project engages citizen scientists to monitor the health of seagrass, a crucial bioindicator species in Roebuck Bay, a globally-significant marine ecosystem that is home to migratory shorebirds, dugong, turtles and the rare Snubfin Dolphin.

The project was established in response to environmental concerns raised by Yawuru Traditional Owners. It was then passionately embraced by local community volunteers and Yawuru country managers who, with the support of Seagrass Watch, have been trained in the scientific monitoring methodology.

The initiative not only empowers the local community in stewardship and monitoring, but the data sets help coastal managers make well-informed management decisions.

This is Environs Kimberley’s only citizen science project and their only marine-based project. In 2024 the group was short of funding for continuing this long term monitoring so Wettenhall stepped in to pay staff wages. It will require funding each year and the group would welcome any other donors.



Photo: Volunteers seagrass monitoring (Dr Malcolm Lindsay)

Tasmanian Land Conservancy “Conservation interventions to safeguard the Marsh-leek orchid”

The group will undertake ex-situ conservation interventions to safeguard the Marsh-leek orchid (*Paraprasophyllum limnetes*). This critically-endangered species is only known at one population at Rubicon Sanctuary in the north of Tasmania. Population numbers have declined since monitoring began in 2009 to a total of 20 plants recorded in 2022.

TLC will work with two other groups to collect seed and mycorrhizal fungi at Rubicon Sanctuary; they will culture a range of mycorrhizal fungi from the site; undertake germination tests of the orchid using cultured mycorrhizal fungi; grow on any resulting seedlings for future use in a Royal Tasmanian Botanic Gardens seed orchard to bolster seed collection and for future conservation translocations.

Due to the small population size, a sustained seed collection effort and the establishment of seed orchards is required for propagation and translocation and hopefully the safeguarding of the species from extinction.



Photo: Marsh-leek orchid in flower (Phil Collier)

Friends of the Brisbane Ranges “Investigating the housing shortage for Brush-tailed Phascogales and other threatened species”

FotBR will utilise the latest eDNA screening technology to test soil samples beneath installed nest boxes and natural tree hollows, looking for the presence of threatened species.

The eDNA testing provides genetic data on species, and is a much simpler way to collect occupancy information than trapping and sampling, and less time-consuming than monitoring using pole cameras or ladders.

This project involves training citizen scientists and volunteers; field testing new eDNA soil and faecal DNA extraction kits; and the installation of additional nest boxes for Brush-tailed Phascogales (70 already in place). All data collected will be uploaded to the Victorian Biodiversity Atlas.



Photo: Brush-tailed phascogales in nest box (Mariea Pacheco)

SMALL ENVIRONMENT GRANTS

Flinders Uni and Kangaroo Island Landscape Board “Evaluation of Kangaroo Island artificial reef structures”

Oyster reefs are important marine ecosystems that support fish production and biofiltration - they have declined globally by 85% within the past two centuries.

Restoration efforts over the past two decades have aimed to recover these oyster reefs. Kangaroo Island's first restored reefs were built in the shallow waters of Nepean Bay in 2022. They included limestone, oyster shells, terracotta tiles and ceramic forms.

This collaborative research project will assess the effectiveness of restored oyster reefs, looking at diversity and abundance of species across four restored reef sites. They will use underwater video stations, and scuba divers. This is an incredibly important piece of work to inform future restoration efforts for everyone who is doing oyster reef restoration, or considering starting a similar project.

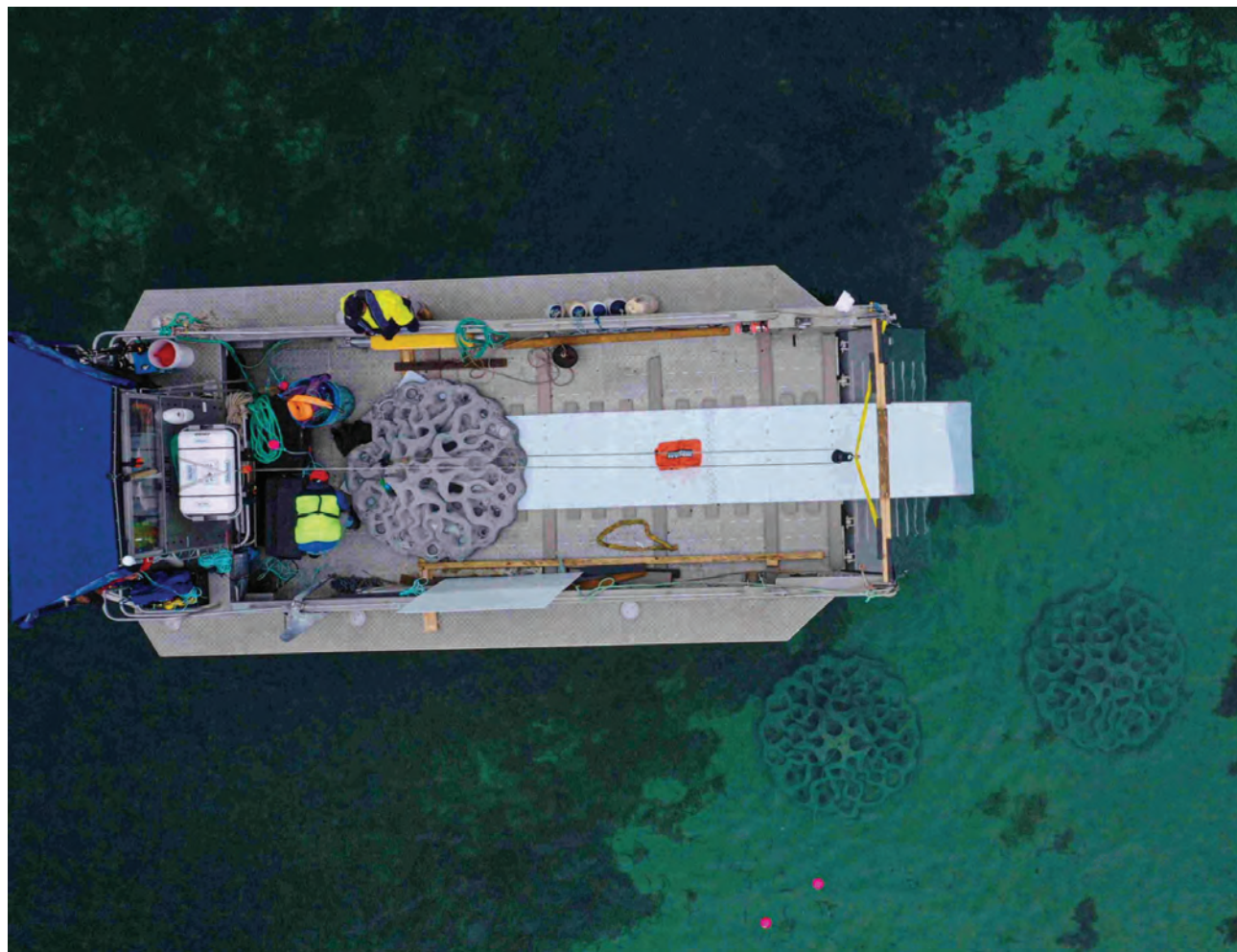


Photo: The Reef Design Lab installed 12 x 3D printed, 2m wide concrete domes (Dan Clark, Ninti Media)

Life Under the Wharf “Tathra Wharf seahorse habitat”

This community-led project aims to restore the damaged marine habitat beneath the heritage-listed Tathra Wharf after it underwent significant structural renovation. Habitat was disturbed, leading to the resident Big Bellied Seahorse population becoming displaced.

Volunteer divers have started with cleaning up debris under the wharf after the construction. They will then install five Living Seawalls onto some of the pylons, translocating macroalgae (*Ecklonia radiata*) on to these habitat panels.

After the panels are installed they will monitor recruitment and growth, and compare what they see to the other pylons. In the long term they hope to enable the return of the Big-bellied Seahorse, and other groups can learn from the outcomes.



Photos: wharf under construction and Big-bellied seahorse

Grassland Earless Dragon Alliance “The lost dragon: a race against extinction to rediscover the critically-endangered Bathurst Grassland Earless Dragon”

The Bathurst Grassland Earless Dragon (*Tympanocryptis mcartneyi*) is critically endangered, with only three known specimens and no sightings since the mid-'90s. Rediscovery of the Bathurst GED holds immense significance for herpetological conservation, and hopefully trigger actions for grassland habitat protection, and captive breeding initiatives.

The group will firstly create a species distribution model (SDM) to identify priority areas for surveys; they will raise awareness among the local community, and engage private landholders in the project.

The Grassland Earless Dragon Alliance is a not-for-profit group who has taken on the responsibility of rediscovering the species, and therefore we are happy to support their efforts and wait with baited breath for a sighting.



Photo: The GED Alliance set up monitoring (Alex Pike)

SMALL ENVIRONMENT GRANTS

Arcadia Coastcare

“National Park Walking Track Booklet”

The group is busy producing a ‘self-guided walk’ booklet for Magnetic Island in North Queensland, highlighting one important section of the National Park Walking Track. Magnetic Island is within the UNESCO Great Barrier Reef World Heritage area, and most of the island is national or conservation park.

The publication includes landscape, geology, plants, animals and insects in consultation with the Wulgurukaba First Nations People, National Parks and academic experts. This professional, educational and entertaining 80-page booklet contains clear maps, photographs and drawings.



LARGE ENVIRONMENT GRANT

Winton Wetlands

“Growling loud in Winton Wetlands and the region”

Sitting within our Small Environmental Grants Program (SEGS) is the first of our ‘large’ grants.

Last year at our strategic planning exercise, the Board of Trustees decided to make 1-2 larger grants within our current grantmaking, thus increasing our annual giving.

We have been supporting the Winton Wetland’s Growing Grass Frog project for a few years with a \$10,000 grant in 2018, \$15,000 in 2021, and \$50,000 in 2024.

The project is about returning the endangered Growling Grass Frog to the Winton Wetlands.

The group firstly prepared the ‘pond’ areas at the wetlands as suitable habitat for the GGF. They then established a fantastic breeding facility at the Winton Wetlands education hub.

The next exciting step was working with Coliban Water to collect frogs from their site in Bendigo. Our Executive Director, Beth, was lucky enough to accompany the team and frog ecologists on the frog collecting night.

Thirty frogs were collected and taken back to Winton Wetlands where they were put in the newly-established breeding facilities, which the WET Trustees then visited. When the frogs have successfully bred, they will be released into the prepared wetland areas.

This is an extremely exciting project. Once a viable population of frogs is re-established at Winton Wetlands, translocations could be undertaken by other wetland groups around Victoria.



The final part of the project will involve signs and information at the centre itself, and visitors are welcome.

There have been a number of partners and volunteers in this project and we are proud to be a part of it.

Taskforce Growler has been set up to coordinate all the players and you can find out more information here - <https://wintonwetlands.org.au/taskforce-growler>



LANDSCAPE RESTORATION GRANTS 2023/2024

There are eight projects under the landscape restoration portfolio. All are being driven by the community groups whose members are living and working in that landscape. After being in this space for over 15 years, we are conducting a review of the program, with external experts. We want to ensure that we are working at a scale that makes a difference for biodiversity, and also in areas that need our attention.

Organisation	Grant Awarded	Amount
Regent Honeyeater Prorject	New worker	\$26,000

Wettenhall Environment Trust has a long history, spanning over 27 years, with the Regent Honeyeater Project in north east Victoria. We have made many grants to this group to cover wages - we issue these grants when they need us, particularly when there are gaps in their government funding.

Under the leadership of worker Ray Thomas, and Chairperson Rob Richardson, the Regent Honeyeater Project has powered through decades of planting strategically-placed habitat corridors, their operations often being a blueprint for connectivity projects everywhere.

For the last seven years Andie Guerin has been the Project Coordinator and has continued to steer the ship - expanding on current habitat corridors, and creating new relationships and new plantings. Surprisingly he is also out there growing plants and putting them in the ground himself.

They have recorded nearly 2,500 hectares of habitat being protected or planted, that's nearly 750,000 seedlings grown and planted across 660 sites.

The group also run community planting events, nest box monitoring programs, and bird surveys. Their record keeping shows 41,000 volunteers being involved.

The Regent Honeyeater Project has decided to focus on the future and on succession.

A new worker will be employed to consider and research new partnerships, new funding opportunities, and new ideas for taking the Regent Honeyeater Project safely into the next decade. We are happy to be there by their side.

If you would like to partner with Wettenhall to support this project, please reach out to us.

For more information, or to provide funding, see <https://www.regenthoneyeater.org.au/>



Photo: Regent Honeyeater Project Chair Rob Richardson with farmer JP Murphy and Project Coordinator Andie Guerin

MALLEEFOWL GRANTS

Wettenhall Environment Trust is working with the Victorian Malleefowl Recovery Group (VMRG) to distribute the Geoff Armstrong Bequest. Grants are available for projects that will make a positive difference to malleefowl conservation and preservation in Victoria or to promote the enhancement of the natural environment for malleefowl in Victoria.

Applications for projects in other states will be considered but Victoria must benefit in some way. In accordance with the policies and aims of the VMRG this may include research projects or activities that include on-ground monitoring, raising awareness of malleefowl issues or undertaking field research.

It may also include research and/or education into known or emerging malleefowl threats (both human and natural) such as predators, competition, land management or climatic impacts on malleefowl numbers or breeding activities.

The citizen science model of science, research and education is strongly supported by the VMRG as is community education and training that leads to malleefowl conservation and preservation.

If you know anyone who is eager to work on Malleefowl conservation, please get them to get in touch with Wettenhall.



DONORS AND SUPPORTERS

Wettenhall Environment Trust is a charitable trust with tax deductible status. Donations that extend the Trust's ability to augment the wellbeing of the Australian natural living environment are gratefully received.

Being a donor to Wettenhall Environment Trust means you are supporting our three grants programs: Small Environment Grants Scheme, Leadership Development Grants, and Community-driven Landscape Restoration.

Opportunities for co-funding are available. If you like the grants you read about in this report, then get in touch with us and become a donor. Thanks to Blue Sky Environmental for collaborating with us to help fund Joel Fostin and his Pandanus project in Noosa; and thanks to Biophilia Foundation for being a multi-year donor and collaborator, helping to fund small biodiversity projects like the Broome Seagrass Monitoring Project.

Please consider donating to Environs Kimberley and their seagrass monitoring project in Broome, featured on page 10 as they require more support to continue to run this citizen science initiative.

The Trust has credit card facilities for accepting donations, or donors are able to donate via direct transfer into the bank account. You can easily donate by clicking on the 'donate' button on our website <https://wettenhall.org.au>

We thank our donors, many of whom tell us about their particular interests like habitat connectivity, endangered birds, and supporting local and grassroots community groups. We appreciate your contribution, and value your support.



Photo: Donors David Wettenhall (middle) and Martin Wettenhall (on the right) pictured here with Tjuntjunjara First Nations People in WA inspecting a planting, and sporting their Wettenhall Environment Trust caps

DONORS 2023/2024

DONORS A-Z up to \$500

Anonymous
Colin Agar
John Agar
Susan Duras
Ian Endersby
Rachel Faggetter
Ian and Elizabeth Fraser
Ann Gillespie
Louise Gourlay
John and Julia Hurley
Margaret Kelso
Christopher Lamb
Philip Moors
Anthony Nicholas
Boyce and Rhonda Pizzey
Carol Richardson
Jennifer Skewes
Rob Southey
Susan Speirs
Keith Stockwell
Gary Warne
Bill Weatherly
Roger West
Wood Park Wines

DONORS A-Z up to \$1,000

Joanna Baevski
Romayne Holmes
Ruth McKenzie
Cecilia Myers
In memory of Suzie Speirs
Marigold Southey
Peter and Barbara Taylor
Peter Wettenhall

DONORS A-Z up to \$5,000

Peter Cope
Michael Martin
Susan Morgan
Robert Porter
Michele Velik and Derek Lord
Martin Wettenhall

DONORS A-Z up to \$10,000

Blue Sky Environmental
Allan Myers
Victorian Mallefowl Recovery Group
David Wettenhall
The Williams Fund (Australian Communities Foundation)

DONORS A-Z up to \$15,000

Biophilia Foundation

MAJOR DONORS \$20,000 and over

Lindsay Adams
Rose Gilder

FINANCE CHAIR REPORT



As the incoming Finance Chair, I am honoured to join the Wettenhall Environment Trust and support its deep-rooted commitment to direct environmental impact.

What drew me to this role is Wettenhall's dedication to projects that foster lasting partnerships and yield tangible results for Australia's environment.

Caring for nature is one of my core values, and I find myself shaping my life around this mission—whether through a career in sustainability, hands-on volunteer work in local parks, or simply beginning each day with gratitude for the natural world, I seek to give back in every way I can to Australia's megadiversity.

In line with Wettenhall's mission, we have increased our grant distributions significantly, reflecting our commitment to support biodiversity during a time of urgent

environmental need. This strategic increase is made possible by our prudent cost management, ongoing support of long-term donors, and the expert guidance of Accru Wealth Management.

While our investment income experienced a modest decline, our net assets continue to grow. This growth reinforces the Trust's resilience and positions us well to continue our mission. Our purpose is not to solely safeguard our financial assets but to deploy them meaningfully for the environmental assets around us. At times when market performance supports our objectives, we see this as an opportunity to increase our giving without compromising long-term stability.

We remain grateful to our long-term donors and partners, whose support enables us to respond to Australia's biodiversity crisis with sustained impact. Moving forward, we aim to continue the elevated levels of grant-giving, nurture our active collaboration with community groups and private landholders, and attract new supporters to amplify our impact.

Rena Zhu, Incoming Finance Chair

To see a copy of the Wettenhall Environment Trust full audited financial report with auditor's notes, find us on the ACNC website <https://www.acnc.gov.au>



FINANCIAL REPORT 2024

Balance Sheet as at 30 June 2024

CURRENT ASSETS

Cash and cash equivalents	\$277,563
Trade and other receivables	\$30,874
Investments	\$4,427,304

TOTAL ASSETS

\$4,735,741

CURRENT LIABILITIES

Provisions	\$13,986
Trade and other payables	\$25,735

TOTAL LIABILITIES

\$39,721

NET ASSETS

\$4,696,021

EQUITY

Capital gift account *	\$1,000,000
Retained earnings	\$2,009,329
Reserves revaluation to market	\$1,686,692

TOTAL EQUITY

\$4,696,021

Income Statement for the year ended 30 June 2024

REVENUE

Income - donations (inc unspent)	\$144,595
Income - investments	\$187,408
Income - interest	\$6,854
Income - other	\$3,482

TOTAL INCOME

\$342,339

EXPENSES

Operating expenses (incl publication, events, support for the landscape restoration program, staff costs etc)	\$119,111
Distributions (grants)	\$349,469

TOTAL EXPENSES

\$468,580

TOTAL NET LOSS

(126,241)

* An internal transfer has been made from 'Capital Gifts' to 'Retained Earnings' for presentation purposes, reflecting the original capital gift amount of \$1,000,000



Wettenhall
ENVIRONMENT TRUST

PO BOX 669

CASTLEMAINE VIC 3450

0431 219 980

wettenhall.org.au

Front cover photo:

Instigator of the Bathurst Grassland Earless Dragon project,
George Madani with a Monaro GED

Printed on recycled paper using non toxic inks and solar power in production
preserving our forests, water and climate by
www.blackrainbow.com.au